



Enriching the CNY community through visual and performing arts since 1892!

Hello friends!

Welcome to our 50th Anniversary Season!

We have some very exciting events happening to celebrate our milestone Anniversary including:

- *RUNA on May 7
- *Heather Pierson Trio on May 21
- *Our 50th Anniversary Retrospective Gallery
- *"Living in Limbo: Portraits from the Border" ~ Exhibit by Bill McLaughlin, Opening June 4, 1-3pm
- *Featured Artists Section
- *Golden Anniversary Summer Jamboree

and so much more!

**NOTICE: PROOF OF VACCINATION REQUIRED AT THE DOOR.
MASKS MUST BE WORN INSIDE.**

For information on how to use the most efficient tool to show your vaccination status at the door, please visit: <https://epass.ny.gov/home> for information on the Excelsior Pass. This is a place to keep a secure, digital proof of your COVID-19 vaccination.

THIS IS AN EFFORT TO PROVIDE THE SAFEST AND MOST COMFORTABLE ENVIRONMENT FOR OUR PATRONS, STAFF, VOLUNTEERS AND ARTISTS, THANK YOU.

Interested in further EOH programming?
Visit our website at www.earlvilleoperahouse.com for information on all our events, how to volunteer, sign up for memberships and more!



RUNA

May 7@ 7PM

Celebrating its 10-Year Anniversary as a band, Celtic-American Roots music “super group”, RUNA, continues to push the boundaries of Irish folk music into the Americana and roots music formats. Interweaving the haunting melodies and exuberant tunes of Ireland and Scotland with the lush harmonies and intoxicating rhythms of jazz, bluegrass, flamenco and blues, they offer a thrilling and redefining take on traditional music.

In conjunction with the band’s 10-Year Anniversary Tour, RUNA released their sixth album, “TEN: The Errant Night”, on March 16th, 2019!

[BUY TICKETS HERE!](#)



Heather Pierson Trio

May 21@ 7PM

The Heather Pierson Acoustic Trio features Shawn Nadeau on upright bass and Davy Sturtevant on, as Heather often puts it from stage, "everything else" — guitar, mandolin, dobro, fiddle, cornet. Davy Sturtevant is a sideman extraordinaire and an accomplished singer/songwriter of his own, wielding both an arsenal of stringed and brass instruments and a gorgeous tenor voice. With wit and flair, Davy performs in a way that moves listeners to tap their toes, nod their heads, and raise knowing eyebrows. Shawn Nadeau is a self-taught phenom who brings an unassuming rock-solid foundation and a keen awareness to every moment of every song, informed by over two decades of wildly varying musical performances, from punk rock to reggae to jazz. In their able hands, these three veteran musicians have catapulted Heather's live performances of her deep well of original music with intricate instrumental arrangements and stirring three-part vocal harmonies. The trio's debut EP, *Still She Will Fly*, was released in May 2015, and its title track was the #2 single on the Folk radio charts for the year in 2015, and three other songs were also in the Top 100 singles on Folk radio in 2015. The trio's full-length debut, *Singin'*, was released in June 2017, and debuted at #1 on the Folk radio charts.

BUY TICKETS HERE!

RESCHEDULED DATE!



Amy Helm

November 18@ 7PM

Singer-songwriter and multi-instrumentalist AMY HELM will play on the historic Earlville Opera House Main Stage on Saturday, April 2, 7pm. Her third album, *What the Flood Leaves Behind*, is her most autobiographical yet, both in content and creation, representing a gathering of ideas and experiences, friends and collaborators. Yet, the album also marks a landing - a pause for the traveling musician and mother of two young boys who was seeking clarity in her calling and career.

After making multiple albums and performing in far-flung places, Helm returned home to Woodstock's Levon Helm Studios just before the pandemic to record *What the Flood Leaves Behind* and reclaim a sense of self. "Going back to the place where I learned so much about how to express music, how to hold myself in music, how to listen to music," she begins, "it was humbling in a funny way. I could see clearly where I came from and where I am now in my life. I was singing from a different place now and for a different

reason.”

BUY TICKETS HERE!

Thank you to our Performance Season Sponsors:

Community Foundation for South Central New York ; Live Music Society; NBT Bank; Preferred Mutual Insurance Company; sfcu; and Bruce Ward, Architect.

Special thanks to our hospitality sponsor Fred's Inn of Norwich.

**GOLDEN ANNIVERSARY
SUMMER JAMBOREE
JULY 2, 1-11PM ~ \$30/2 FOR \$50**

*Performances on the Mainstage and in the Courtyard
Eddy Vollmer & Friends; Colin Aberdeen Duo; Nate Gross Band; Lipstick & Whisky
featuring Laughing Buddha Episodes; The Old Main*



Click the image above to buy tickets for this 50th Anniversary Special FUNdraiser!

NOTE: If you are purchasing 2 tickets for \$50 you will need to quick pick 2 tickets and then choose the option for each ticket to be \$25.

Summer
Youth
Musical
Theatre
Camps!!!



MUSICAL THEATRE CAMP:
8/29 - 9/2
8:30 - 1:00pm daily
AGES 8-13
(LOCATED AT TSDC WITH PERFORMANCE AT THE EARLVILLE OPERA HOUSE)



MINI MUSICAL THEATRE CAMP:
8/22 - 8/26
8:30 - 12:00pm daily
AGES 5-8
(LOCATED AT THE EARLVILLE OPERA HOUSE)





Summer Youth Musical Theatre Camps!!

The Spot Dance Center,
Jenni's Music &
The Earlville Opera House
are proud to be teaming up for
this summer's musical theatre
camps - now open to ages 5-13!

VISIT:
WWW.SPOTDANCECENTER.COM
FOR DETAILS AND TO REGISTER!

Sign up here by clicking the image above!

**\$200 for Mini Musical Theatre Camp
\$225 for Musical Theatre Camp**



Special thanks to Golden Artist Colors for their support of our Visual Arts Program.

2022 Upcoming Gallery Exhibit Opening June 4, 1-3PM

"Living in Limbo: Portraits from the Border"

Presented by Bill McLaughlin

Short Bio

Bill McLaughlin is a contemporary American Tonalist landscape painter. Largely self-taught, Bill works in oils, pastels and watercolors on a variety of surfaces. His landscapes are explorations of Nature's most subtle moods. Bill lives and paints on his organic homestead in New Berlin, NY, where he tends his heirloom apple orchard and weedy gardens.

Artist Statement

My work as a visual artist has mostly expressed itself in my relationship to Nature and the land on which I live. Witnessing the land in all its seasons and its many moods supplies much of the inspiration for my paintings and photographs.

It's important for my landscapes to express not only my emotional connection to the land but to hopefully instill in others the peace and serenity that I experience in Nature—and now more than ever—the urgent necessity for active stewardship of our land and water.



Pictured above: "Esmerelda, Pamela & Edwin, Michoacan, Mexico; 2019"

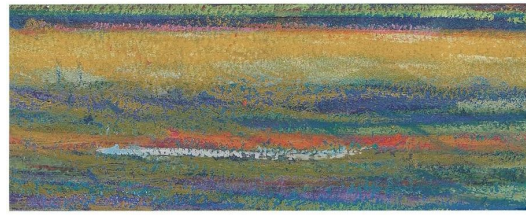
To help advocate for human rights, immigration reform, social justice with a special focus on issues related to the US/Mexican border, contact **BORDER ANGELS at** www.borderangels.com

2022 Gallery Exhibit **March 19 - October 22**

50th Anniversary Retrospective

Earlville Opera House (EOH) is celebrating 50 years as an incorporated nonprofit arts center in 2022 and we are celebrating the many talents of previous exhibitors!

EOH is home to three gallery spaces, the East Gallery, West Gallery and the Arts Café which annually present between 12-15 solo exhibitions of regional and national contemporary visual artists representing all media, and we host the coveted yearly Quilt Show. This year, we're hosting one special collective exhibit combining and celebrating the past beautiful creations that have highlighted our walls.



Pictured above: Three Landscape Studies by Francis Timothy "Tim" Walsh, Ph.D., M.F.A.

Artist Spotlight

50th Anniversary Retrospective Exhibit Artist Spotlights!

Our "50th Anniversary Retrospective Gallery Exhibit, 1972 ~ 2022" opened Saturday, March 19 with a very meaningful reception and runs through October 22 (gallery exhibits are always free and open to the public!).

This special collective exhibit celebrates the many talents of past showing visual artists who have highlighted their beautiful creations in the EOH galleries. Over the course of the exhibit, we are going to feature each participating artist! FIRST UP...



Bill McLaughlin

Short Bio

Self-taught painter and photographer living and working in Chenango County.

Artist Statement

My work as a visual artist has mostly expressed itself in my relationship to Nature and the land on which I live. Witnessing the land in all its seasons and its many moods supplies much of the inspiration for my paintings and photographs.

It's important for my landscapes to express not only my emotional connection to the land but to hopefully instill in others the peace and serenity that I experience in Nature—and now more than ever—the urgent necessity for active stewardship of our land and water.

[**READ MORE**](#)

Kathy Glavin

The 50th Anniversary Retrospective Exhibit is a FASCINATING idea and collection of artists through these many years. In a way it's a lovely, historical "thank you" to artistic contributors, to say your efforts are not forgotten...we want you back!

I've been an artist participant within recent years and have appreciated the care and respect given to my work, as well as my person. The EOH staff has been accommodating and gracious throughout the exhibit process and patient with all the extra questions and concerns.



[READ MORE](#)



Julian Button

The Sherburne Arts Festival Committee is pleased to announce that this year's featured artist will be Julian Button, of Sherburne. The festival will take place on June 11, 2022, in Gaines Park, Sherburne. Gaines Park is located on Route 80 East (East State St.), next to the Sherburne Public Library.

Julian operates his studio and business in Sherburne and works in multiple media, including watercolor, acrylic, airbrushing, wall murals, home and business portraits, historical reconstructed renderings in either ink or pencil, handmade paper, books, hand-sculpted paperscapes, logos and design work; wedding, fine art, and macro-photography; leaded glass, computer art, and sometimes a mix of media.

[READ MORE](#)

GOLDEN
ARTIST COLORS®





CALL FOR GALLERY SUBMISSIONS

AT THE EARLVILLE GALLERIES

FOR OUR 2023-2024 CYCLE

DEADLINE: November 1, 2022

Upcoming SCR and Restart NY Regrant Projects!

For a list of all State Community Regrant projects visit us at:
<http://www.earlvilleoperahouse.com/2022-awards>

Watch for the 2023 SCR Funding Announcement Coming Soon!

Broome County

Christina Muscatello

Art Talks

Every Wednesday

Binghamton, NY

www.memorymaker.me

Binghamton Community Orchestra

Public Concert featuring the 2021 STMTA Student Concerto Competition

May 14, 2022, 7PM

Maine-Endwell High School Auditorium, 750 Farm to Market Rd, Endwell, NY 13760

www.binghamtoncommunityorchestra.org

The Binghamton Poetry Project, with the Binghamton Center for Writers

The Binghamton Poetry Project (BPP)

Through November 30

Binghamton, NY

www.thebinghamtonpoetryproject.wordpress.com.org

The Binghamton Theater Organ Society

Speedy (Film with Dennis James)

May 1, 2022

Forum Theater, Binghamton, NY

www.binghamtontos.org

Vestal Museum

Second Saturday 2022

May 14, June 11

Vestal Museum, Vestal, NY

www.thevestalmuseum.org

Otsego County

Otsego Dance Society

Otsego Dance Society's Summer Community Dance Series

May 5, June 3

Cornfield Hall Cooperstown, NY

www.otsegodancesociety.weebly.com

Otselic Valley Fishing & Heritage Association

Fishing & Heritage Day

May 21, 2022

Otselic Valley

www.ovfish.org

Cherry Valley Artworks, Inc.

2022 Summer Concert Series

May 21, June 4, June 25

Cherry Valley Artworks, Cherry Valley, NY

www.cvartworks.org

Orpheus Theatre

Orpheus Theatre Takes Children's Theater "Into the Woods"

June 27-July 17

Orpheus Theater, Oneonta, NY

www.orpheustheatre.org

Butternut Valley Alliance

On the Trail of Art

June 11-12, 2022

Basswood Pond State Forest, Burlington Flat, NY

www.butternutvalleyalliance.org

***Foothills Performing Arts Center**

The Diary of Anne Frank

May 20-22, 27-29 2022

Foothills Performing Arts Center, 24 Market Street, Oneonta, NY 13820

www.foothillspac.org

***Aunt Karen's Farm/ The Visionary**

The Force at First (at the Visionary)

Performances June 16-19

AFK Foundation Cooperstown

www.auntkarensfarm.org

***Cherry Valley Artworks**

The "Big Takeover" in Concert: A Celebration of a New Beginning

Performances June 16-19

AFK Foundation Cooperstown

www.cvartworks.org

Chenango County

Bonnie Gale, Willow Artist

Willow Arts for the Oxford Academy

April 4 - December 16, 2022

Oxford Academy, Oxford, NY

www.bonniegale.com

Gilbert Polk

Fun Community Improv for Everyone

May 1 - September 5, 2022

Guernsey Library Norwich

www.guernseymemorallibrary.org

6 on the Square

2022 Performances

May 15, 22 and June 4, 18

6 on the Square, Oxford, NY

www.6onthesquare.org

Jericho Arts Council/ Gallery Committee

Bainbridge Art Trail/ Regatta Row

May 21, 2022

Bainbridge, NY

www.jerichoarts.com

The Sam and Adele Golden Foundation for the Arts

2022 Made in Paint Exhibition: 2020-2021 Artists in Residence

Through September

Sam and Adele Golden Foundation for the Arts, New Berlin

www.goldenfoundation.org

The Place

Music Together at The Place

Ongoing

The Place, Norwich, NY

www.theplacenorwich.com

***Jericho Arts Council**

Small Town Big Band

May 14, 2022

Bainbridge Town Hall Theater, 15 North Main Street, Bainbridge, NY 13733

www.jerichoarts.com

***Moore Memorial Library**

Cultural Heritage Festival

May 26, 2022 ~ 4-6PM Asian Fest

59 Genesee Street, Greene, NY 13778

www.greenenylibrary.org

***Mid-York Concert Band**

Small Town Big Band

May 22, 2022

Norwich High School, 89 Midland Drive, Norwich, NY 13815

**Denotes Restart NY Regrant Awards. The Restart NY Regrant Program is made possible with public funds from the New York State Council on the Arts with the support of the Office of the Governor and the New York State Legislature, and administered by The Earlville Opera House.*

EARLVILLE OPERA HOUSE GIFT SHOP

MARCH 19 - OCTOBER 22

TUESDAYS - FRIDAYS 10AM - 4PM // SATURDAY 12 - 3PM

18 EAST MAIN ST., EARLVILLE, NY 13332
EARLVILLEOPERAHOUSE.COM // 315.691.3550

**Come on in and check out our new 50th Anniversary Season
Tumblers and T-Shirts!**

Wishlist

We are always in need of office supplies and other things! If you can help, here are some other things we wish for:

- Plants and Flowers
- Dolly for moving items
- New Vacuum Cleaner



Become a Sustaining Partner



Your beloved Earlville Opera House faced tough new challenges during the pandemic shutdown. With no shows, no workshops or classes, galleries and gift shop closed and the theater dark we lost major portions of our revenue.

We are still recovering from this and you can help by becoming a Sustaining Partner!

[Click here for more information!](#)

Save-A-Seat

Preserve a Place in History!

Would you like to commemorate someone, honor a family member, friend, organization, or business? Reserve your custom engraved seat plaque, and pick your available seat in our 1892 historic theater! Seat plaques are \$200 each and include engraving, mounting on the seat of your choice, and a free individual annual membership (a \$50 value!).

Call 315.691.3550 or [click here](#) to reserve your seat in the landmark theater.
Opportunities are limited!

Save-A-Seat to support the mission of the Earlville Opera House!



SAVE-A-SEAT TODAY!



The Earlville Opera House Multi Arts Center enriches the Central New York community through the visual and performing arts while preserving our beautiful historic theater. Founded in 1972 as a not-for-profit, volunteer-based, community service organization, we promote the arts in a rural region of Central New York by offering programs of cultural, educational, and historical significance; and preserving and restoring the architectural and historic integrity of the Earlville Opera House, a unique second-story theater constructed in 1892.

MEMBERS
MAKE IT POSSIBLE



Become a member today!

Support the arts in your community -- volunteer today!

VISIT OUR WEBSITE!

STAY CONNECTED!



Council on the Arts

Earlville Opera House events are made possible, in part, with public funds from the New York State Council on the Arts with the support of the Office of the Governor of the State of New York and the New York State Legislature, and through the generosity of EOH members.